



MA State Grange Youth & Junior  
Committee presents....



# FUN IN THE

# SNOW!

## FEBRUARY 22nd

SATURDAY



### SNOW TUBING @ Berkshire East Mountain Resort

66 Thunder Mountain Rd, Charlemont, MA

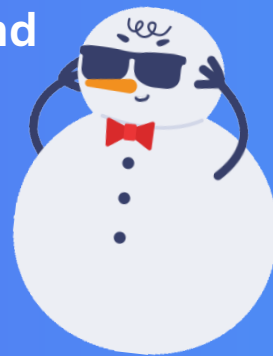
**Tubing starts at 1:00 and ends at 2:30**

**\$10 per participant - Must pay by February 2nd**

LIMITED CAPACITY - Reserve early!

42" minimum height ~ Tubes provided ~ Waiver required

There is a lodge for both tubers and non-tubers to hang out.



### WARM-UP PARTY @ Shelburne Grange

Fellowship Hall, 17 Little Mohawk Road, Shelburne, MA

**3:00 - 5:00** (*Come even if you don't go tubing*)

Hot Chocolate and Snacks provided by

Connecticut Valley Pomona Grange at no cost.

Bring your favorite Board game!



**Call or text Roland at 413-475-0520 by February 2nd to reserve your spots!**

Make checks payable to: **MASS STATE GRANGE**

Mail checks to: **Roland Giguere, 40 Little Mohawk Rd, Shelburne, MA 01370**